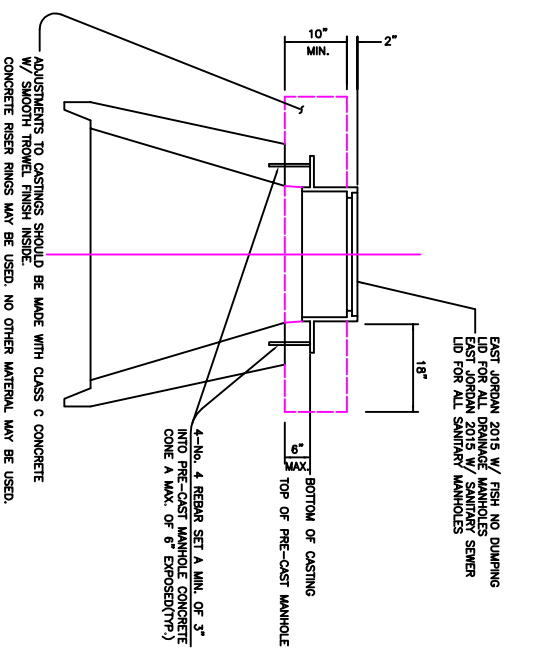
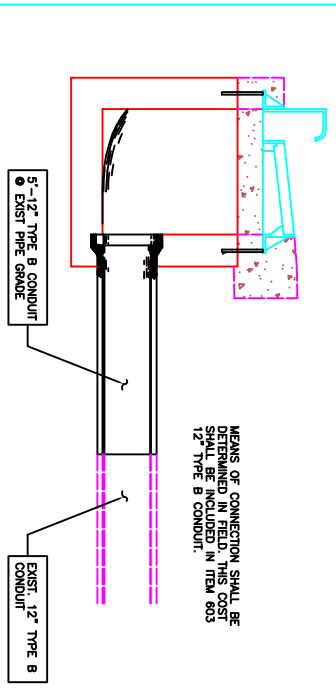


**Massillon Manhole Casting Set**



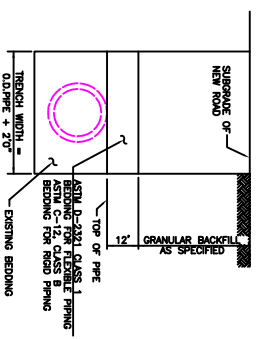
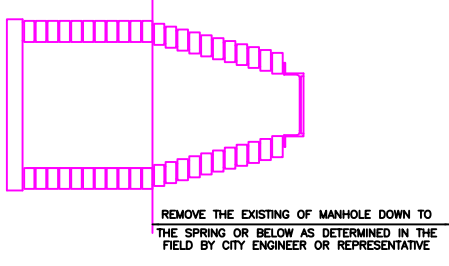
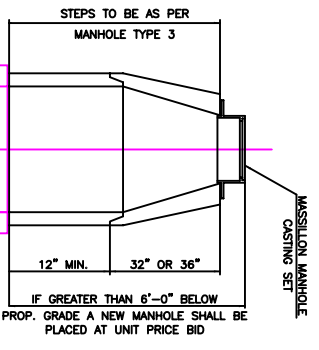
**Massillon Curb Inlet (MASS CI-1)**



REF.	TYPE	LOCATION	T/C	INVERTS
CB-41	MASS CI-1	292+34.04, 181T.	1011.92	D.I.F.
CB-42	MASS CI-1	292+27.38, 181T.	1012.23	D.I.F.
CB-43	MASS CI-1	286+19.06, 181T.	1001.48	D.I.F.
CB-44	MASS CI-1	295+35.54, 181T.	1000.97	D.I.F.
CB-45	MASS CI-1	288+80.30, 181T.	990.31	D.I.F.
CB-46	MASS CI-1	298+80.87, 181T.	990.30	D.I.F.

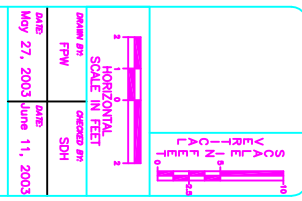
D.I.F. - THE CONTRACTOR SHALL DETERMINED ALL INVERTS BASED ON EXISTING INFORMATION IN FIELD. BOTTOM OF CATCH BASIN SHALL BE EQUAL TO THE LOWEST PIPE.

**(MASS CI-1) INFORMATION NOT IN PROFILES OR DETAILS**



**Trench Rehabilitation**

NOTES  
ALL PIPE JOINTS MUST BE FIBED AS DIRECTED IN FIELD



DATE	REVISED BY	DATE
May 27, 2003	SDH	June 11, 2003

**Lincoln Way West Rehabilitation**

Details  
City of Massillon  
Stark County, Ohio



REVISIONS	DATE	DESCRIPTION

ESTIMATED PROJECT NUMBER  
03ST03032.DWG

ACCOUNT NUMBER  
03ST03